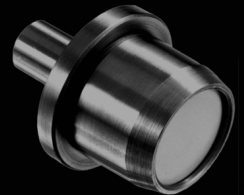
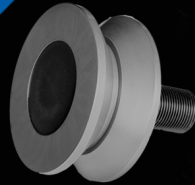
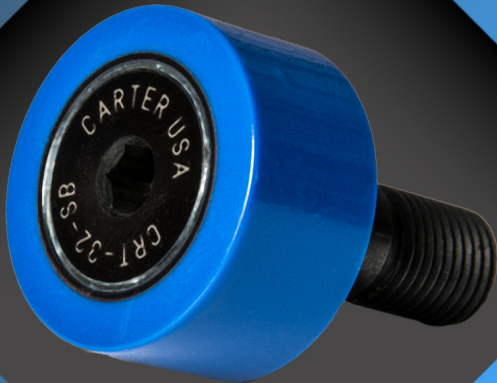


CARTER®

Bearings Are Our Business



Made in the USA
for over 50 years

Custom Bearings **Fast**



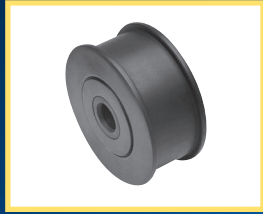
Mast Guide



Double Row Needle Bearing



Delrin Outer with Stainless Stud



Chain Sheave



Band Saw Guides



Stainless Track Roller

Carter has the fastest lead times in the industry for custom orders. Any of our standard bearings can be modified to provide the exact design features required such as:

- Custom materials and finishes
- High/low temperature modifications
- Special re-lube port options
- Special laser-etched markings
- Modified dimensions (e.g. custom stud lengths)
- and more...

Carter can also manufacture completely custom solutions rather than minor modifications. If you are having issues with needle bearing failure, give us a call. We can schedule a visit to assess the way they are being used and help determine what will work best for your application.

If you have a special bearing need, contact Carter. We know how to meet all of your requirements.

New: Xtreme Duty Stainless

96 Hour Salt Spray Testing

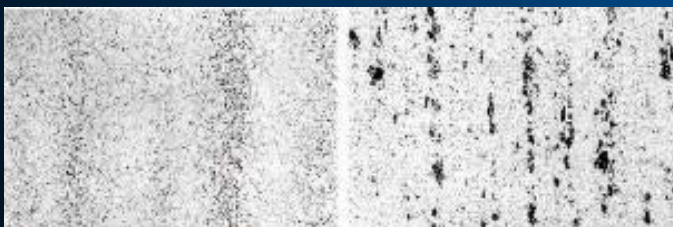


XD15NW



440C

200x Microscopic Imaging



XD15NW

440C

Carter has expanded its stainless offering. Now available as a custom order is an alternative stainless material, utilized frequently in the Aerospace industry, called XD15NW.

- High nitrogen content gives XD15NW much greater corrosion resistance than standard stainless.
- Increased fatigue/wear resistance
- Decreased vibration
- Higher operating temperature

Standard Product Series



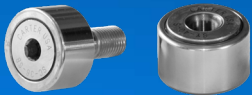
Standard Cam Followers and Cam Yoke Rollers

Carter's standard bearings are available as sealed bearings with a slotted head, a hexagonal socket, a heavy duty stud, eccentric stud or a crowned outer race.



Hi-Roller™ Idler Rollers

Hi-Rollers are designed for applications where both radial and thrust loading are present. Available with deep groove ball bearings or tapered rollers, they come in v-groove, plain and flanged styles.



Xtenda Stainless Steel Cam Followers and Yoke Rollers

440C stainless steel bearings, designed to reduce corrosion in harsh environment applications, come standard with food grade grease and are FDA approved.



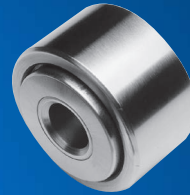
Polyurethane Coated Bearings

Our comprehensive line of polycoated bearings can be used in applications where noise reduction, reduced track wear and non-marking are important factors.



Chrome Plated Bearings

Chrome plated cam followers and yoke rollers contain stainless steel needles and offer higher corrosion resistance than a standard bearing.



Neverlube Cam Followers and Cam Yoke Rollers

The Neverlube line is an economical sintered bushing design with large lube reservoirs for dependable long-term performance.



CMR Caged Rollers

The heavy duty caged rollers are useful in applications where shaft misalignment and higher speeds exceed the specifications of full complement bearings.



Metric Cam Followers

Recently added is a full metric line of cam followers ranging in OD from 16mm up to 72mm. Available variations include eccentric sleeves and cylindrical or crowned outer races.



Custom etching is available for any standard or special bearings at no additional cost

www.carterbearings.com

Cross Reference Product Search

Enter the part number in the search box below. The cross reference table will filter as you type. You may also hover your mouse over the part description to see the full description.

cf-1 1/2-b

Carter	McGill	RBC	Smith	Torrington	Osborn	Description
CNB-48-B	CF-1 1/2-B	S-44-W	CR-1 1/2-B	CRB-24		1,500 - Hexed Unsealed Ca...
CSFH-48-A	BCCF-1 1/2-B					1,500 - Neverlube Cam Fol...
SFH-48-A	BCF-1 1/2-B					1,500 - Neverlube Cam Fol...

- Part number cross reference search
- Attribute-based product look-up
- 3D model downloads
- PDF part drawing downloads
- Full online catalog

Standard Cam Followers



Our everyday needle bearing, also available with a crowned outer for applications with track alignment variations

Eccentric Stud Cam Follower



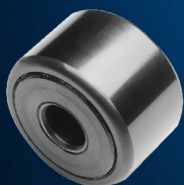
The perfect choice for applications where you need to account for slight variations in mounting hole location.

Heavy Stud Cam Follower

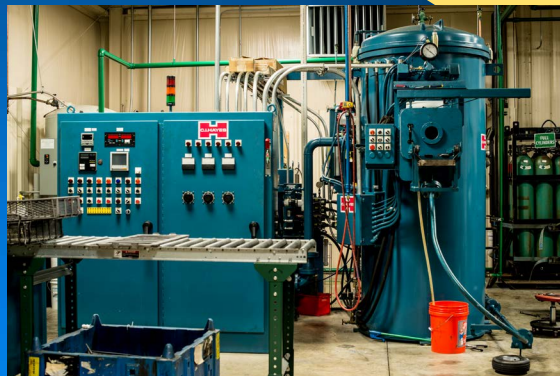


When you need greater deflection resistance but your design won't allow a cam yoke roller and through-shaft.

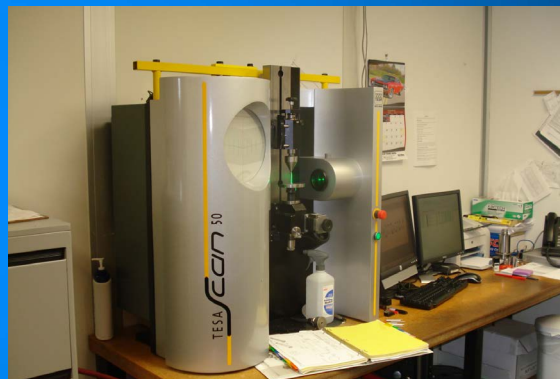
Standard Cam Yoke Roller



These allow through-support and greater load handling capacity since stud deflection is not a consideration.



In-house Heat Treat Capability



Computerized Inspection

Distributed by:

